

Rene Stam

Van: Daniel Fußnecker
Verzonden: vrijdag 18 januari 2019 8:25
Aan: Rene Stam
Onderwerp: AW: MVT-51.

Hello René,

on the CAN4ANA all measured values are automatically switched if you change from voltage to current.

If your analog input is configured for voltage and your signal is 6,00V you'll see the value 6000. If you change from voltage to current with the digital output it changes as follows: 10mA is showed as 10000, too. So please don't bother to much about the 1digit=1mV information.

Physically we just have one analog input on the µC the value which is measured by the input depends from the configuration output.

DO_30V_10V_X => 0 = Pin 1 AI_X is 10V input, 1 = 30V input
DO_I_X => 1 = Pin 1 voltage output, 0 = current output

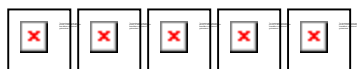
Regards,
Daniel

Mit freundlichen Grüßen / Best regards

i.A. Daniel Fußnecker
Vertrieb / Technischer Support
Sales / Technical Support

 **MRS Electronic GmbH & Co. KG**
Klaus-Gutsch-Str. 7
78628 Rottweil

Phone: +49 741 2807 1176
E-mail: Daniel.Fussnecker@mrs-electronic.de
Web: <http://www.mrs-electronic.de>



Eingetragen: Amtsgericht Stuttgart HRA 732 915 - Geschäftsführer: Günther Dörgeloh - UST-ID-Nr.: DE 815 659 296

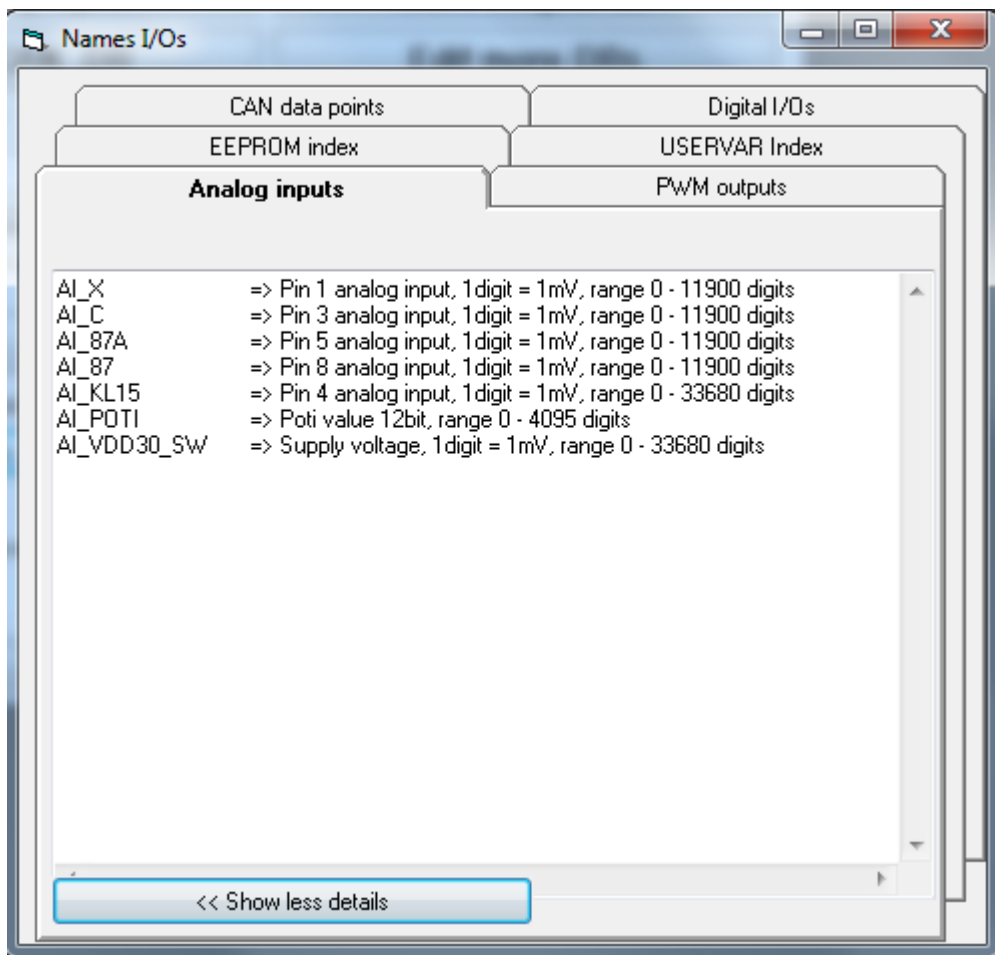
This Memo may contain confidential information. If you are not the intended recipient, you are not authorized to make use of the information in this Memo. Please inform me immediately that you received it by mistake and delete this document. Thank you.
Our Privacy Policy: <https://www.mrs-electronic.de/en/privacy/>

Von: Rene Stam [mailto:rene@bram-engineers.nl]
Gesendet: Donnerstag, 17. Januar 2019 12:48
An: Daniel Fußnecker
Betreff: MVT-51.

Daniel

Have you already a answer on this issue.

We have a small project where we make some dedicated slave software where we can switch between volt/current. So we like to know how the current will showed, because in IO names of 1.112.300.xx there is only 1 digit=1mV



Where the datasheet is mentined there is analog volt/current.

Possible inputs and outputs

Digital inputs	4
Frequency inputs	2
Analog inputs 0-11V, 0-30V, 0-25mA	4
Analog outputs 0-10V, 0-25mA	4

Please advice

Met vriendelijke groeten,
Kind regards,

René Stam



Bram Engineers B.V.
Ebweg 57
2991 LS Barendrecht
The Netherlands

Tel: +31 (0)10 2839747
Email: rene@bram-engineers.nl
Website: www.bram-engineers.nl

Importeur van controllers, displays, keypads en inclino's van
[Epec](#), [MRS](#), [Wachendorff](#), [Blink](#) & [Gemac](#)



This e-mail was sent by Bram Engineers. The content of the e-mail and any attachments is confidential and intended for the addressee only. If this e-mail has been sent to the wrong address, Bram Engineers kindly requests that you send an e-mail immediately to info@bram-engineers.nl stating the name of the sender and the addressee, and that you then delete this e-mail from your system without making a copy, using the content in any way and/or informing third parties about the content. Bram Engineers excludes any and all liability if information in this e-mail is incorrect, incomplete or does not arrive on time, including if any damage or loss is incurred as a result of this e-mail. Bram Engineers is not liable for the transmission of viruses and it is your responsibility to check this e-mail and any attachments.